

Northwest Georgia Regional Cancer Coalition

Proposal Submitted: May 2003
RPE Status: Designated December 2003

Planning Grant Award: \$309,376
Estimated Match: \$502,267

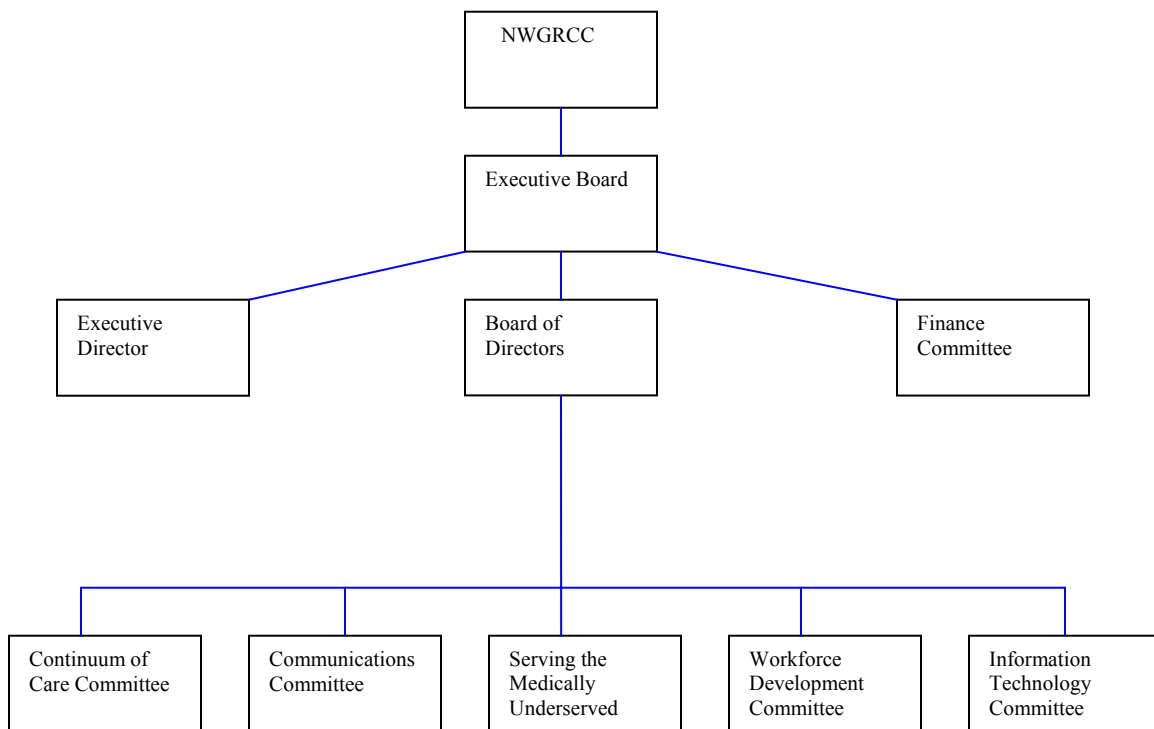
Descriptive Information

- 9 Counties
- Population 457,066
- 8 Hospitals
- 2 Public Health Districts (1-1,1-2)

Number of people involved in planning phase: >150

Strategic Focus: Cancer Care Nurse Navigator Training & Integrative Oncology

Structure



Programs

Six committees were created to help design of programs. These were: -

- Workforce Development
- Continuum of Care
- Serving the Medically underserved
- Communication
- Information Technology
- Finance

Workforce Development

- a) Cancer Care Nurse Navigator Certification Program – Preparation of recruited registered nurses already in the workforce to provide community based care for cancer patients and families. Focus of training will be in providing assistance to patients, beginning with screening and detection and progressing through post-diagnosis treatment and support (including financial and psychosocial assistance). Training will also include cancer prevention, screening, treatment, palliation and end of life care. This is a certificate program approved by the Georgia Nurses Association for 67 contact hours, or 6 semester hours of college credit.
- b) Radiation Therapy Training Program – An online course is to be offered by Coosa Valley Technical College in an effort to increase the number of radiation therapists in the state.
- c) Cancer Registrar Training Initiative – Development of a program to train cancer registrars within the state using both web-based and classroom instruction. Goal to prepare students to sit for their certification exam by the National Association of Cancer Registrars. Will be a partnership between SE Georgia Cancer Coalition and NW Georgia Cancer Coalition.
- d) Community Health Ministries – Empowerment of neighborhoods and faith communities to organize culturally appropriate and sound methods of educational outreach as well as social supports for persons living with cancer. This will be aided by Community Health Advisors and Parish Nurses who will educate and help advise the community on cancer issues. This program will be pursued with the assistance of the Public Health Department.
- e) Integrative Oncology Program – A reproducible clinic model that will holistically seek to integrate traditional methods of education, detection and treatment of cancer with complementary/alternative treatments, healings and lifestyle practices. An elective has been designed in Integrative Medicine to be offered to medical residents in training at Floyd Medical Center.

Continuum of Care

- a) Supportive Care Guidelines – Creation of a standardized Regional Supportive Care Guidelines that will include: -
 - i. Essential Cancer Care Packet - forms that will establish patients' end of life care wishes, e.g. DNR, DNH, POLST, durable power of Attorney, etc. which the patient will keep with them at all locations - home, hospital, nursing home
 - ii. End of Life Choices Video - scripted in English and Spanish will cover palliation, comfort care, hospice and other care options
 - iii. Regional Facilities Brochure – listing of Hospices, Home Health Agencies, Hospitals, Public Health Depts., Nursing Homes and Assisted Living Homes in the 9 county region
- b) Regional Clinical Research Initiative – This will include the region hiring a research oriented oncologist to oversee the program and work with GA CORE, and hiring Clinical Research Associates to assist practices in enrolling patients into clinical trials and collecting research data.
- c) Many Streams Healing Systems – This oasis type setting will provide residential retreat and group support for cancer patients, caregivers, families and health care providers. Complementary as well as traditional medical therapies and referrals will be offered.

- d) www.nwgacancer.org – Website contains resource information concerning cancer care, education, prevention information and opportunities as well as special events by county for the 9 county region.

Originally Submitted Budget

	Year 1	Year 3 (Cumulative)
GCC request	\$1,553,576 (37.6%)	\$3,631,036 (30.4%)
Match	\$2,576,364	\$8,315,968
Total	\$4,129,940	\$11,947,004

GCC costs per capita in year one = \$3.40

Revised GCC request year 1 = \$2,148,121